

Updating SU-Secure for new Wifi Certificates - Andriod device

Instructions:

****Before starting the instructions below, depending on the type of Android device you have, you will need to go to your Wi-Fi settings and forget both the SU-Guest and SU-Secure wifi networks AND/OR turn off Auto-Join on both SU-Guest and SU-Secure.**

1. Change your Wi-Fi to connect to the **SU-Connect** wireless network from the list of wifi connections available.
2. Open any web browser and navigate to <https://connect.salisbury.edu> if it does not automatically open that page.
3. Choose **Personally Owned Device** or **Salisbury University Owned Devices (having an SU tag)**.
4. Leave Local Server selected and click **Download**



The image shows a mobile app configuration screen for Salisbury University. At the top is the Salisbury University logo. Below it, text states: "This option configures private/personal devices to connect to the Salisbury University wireless network." It then says "The following system was detected:" followed by an Android robot icon and the word "ANDROID".

Step 1: Please select a download source and install App.

Local Server ▾ Download

To allow "Local Server" App install on your device, you may need to goto "Settings" and select either "Security" or "Applications". Turn on "Allow installation of non-market apps".

Step 2: Return to this page to **connect** by selecting JoinNow below.

JoinNow

Note: if clicking the **JoinNow** button does not open the App, please use Android's built-in browser or Chrome browser.

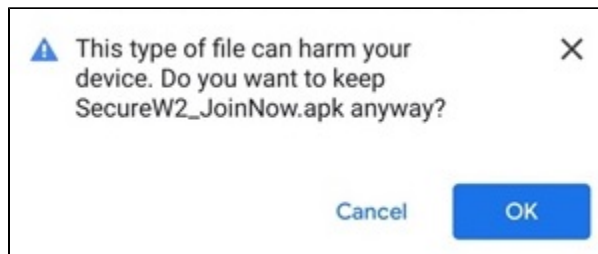
By clicking the JoinNow button you accept the following [terms and conditions](#).

Was your device detected incorrectly?

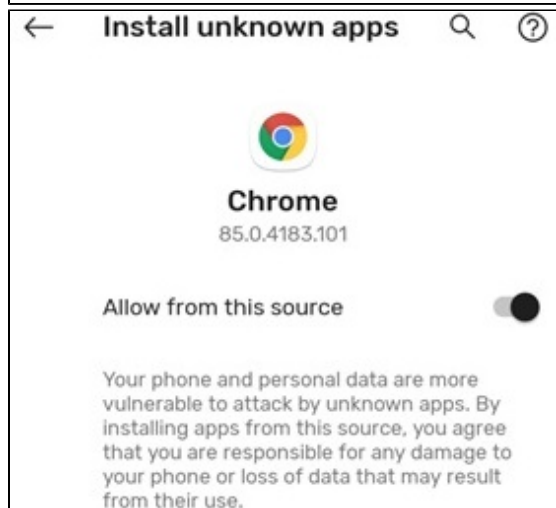
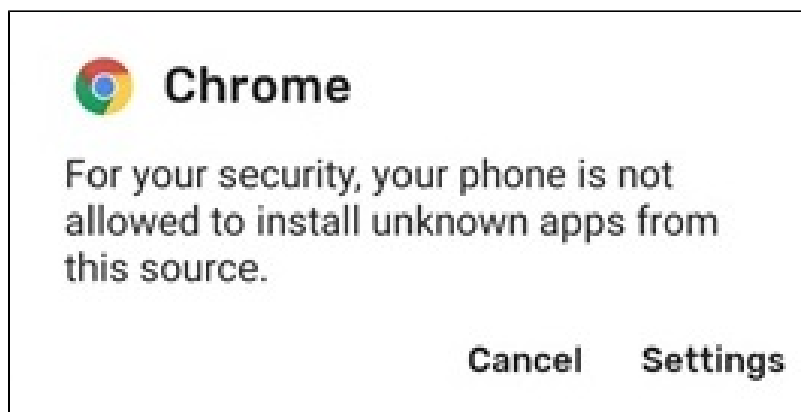
Select your device: Android ▾

Privacy Policy Powered by SecureW2

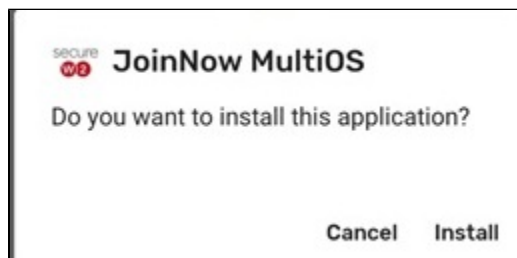
5. If you receive a warning stating "This type of file can harm your device. Do you want to keep SecureW2_JoinNow.apk anyway?" Choose **OK**.



6. You may receive a message stating your phone is not allowed to install unknown apps. Select **Settings** and verify "Allow from this source" is **enabled**.



8. When prompted "Do you want to install this application?" select **Install or Open**.



9. You will be brought to the screen shown below with Secure W2 at the top. When you arrive at this screen go back to the browser used initially and select **Join Now**.

secure **W2**

CONNECTED TO : SU-CONNECT

Reconnect

Use my existing credentials

Restart Setup

Submit new credentials

Search and Setup

New Network

Email Feedback and Logs

This will launch your email app, please provide any appropriate details

Or, try going through our [troubleshooting guide](#)

Salisbury
UNIVERSITY

This option configures private/personal devices to connect to the Salisbury University wireless network.

The following system was detected:



ANDROID

Step 1: Please select a download source and install App.

Local Server

Download

To allow "Local Server" App install on your device, you may need to goto "Settings" and select either "Security" or "Applications". Turn on "Allow installation of non-market apps".

Step 2: Return to this page to connect by selecting JoinNow below.

JoinNow

Note: if clicking the JoinNow button does not open the App, please use Android's built-in browser or Chrome browser.

By clicking the JoinNow button you accept the following [terms and conditions](#)

Was your device detected incorrectly?

Select your device: Android

Privacy Policy

Powered by SecureW2

10. If you have location sharing turned off you will see **Location Permission Required**. Please select **Yes, App will configure and connect**.

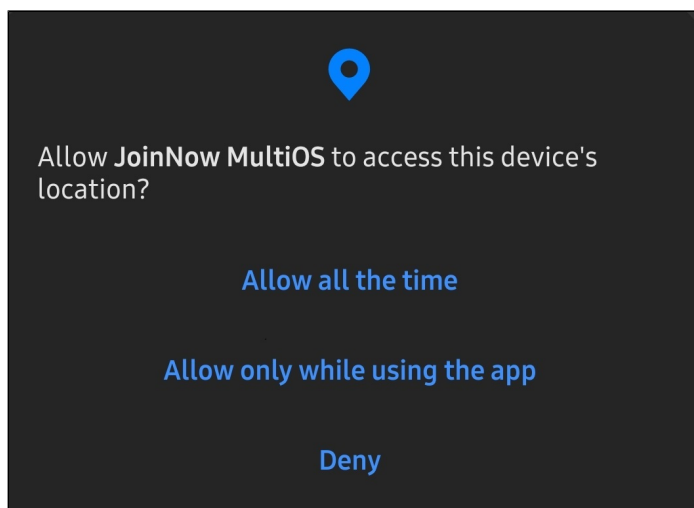
Salisbury
UNIVERSITY

Location Permission Required


Yes, App will configure and connect

No, App will only configure, I will manually connect

11. Give permission (Allow) for the JoinNow MultiOS app to access your location.



12. Enter your SU username and password when prompted and select continue.



Please enter your credentials

☐ Show Password

13. You have now connected to SU-Secure. Click **Next** to continue.



Nice!

You have successfully connected to SU-Secure.

We're almost done.

Click the Next button to finish up the last bit.

Next

4. You're finished! Choose **Done** to complete the process.



1. Remove the SU-Connect network(s)

Forgetting the SU-Connect network(s) used to configure your device will ensure it stays connected to the correct Wi-Fi. Click [here](#) to go to Wi-Fi settings. To forget a network select it, long press then press "Forget".

2. Don't delete this app

If you delete this small 15MB application, your wireless connection may be lost. Only delete the app if you don't need to connect to the campus network anymore. Google has promised to fix this in a future update.

3. Enable location permissions

In order for an application to auto-connect a device to a network, Google requires the app to have Location Permissions (on Android 10 & higher while app is in use). If you choose not to allow Location Permissions, you will need to go into your Wi-Fi settings and select your Wi-Fi network manually.

You're finished!

Happy browsing :)

Rate Us

Done